





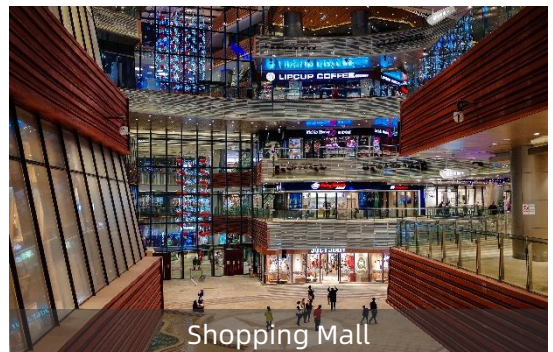
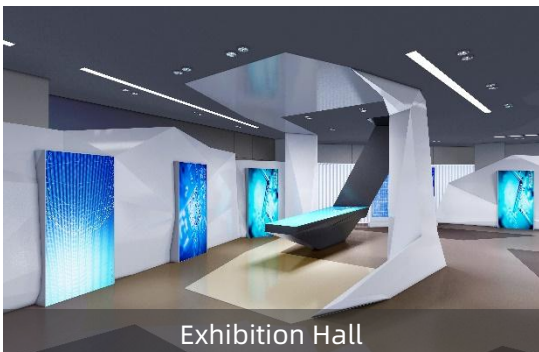
# IS Series

-  Flexible in shape
-  Front Maintenance
-  Thin & Light
-  Arc Lock Design

## Product Feature

- Ultimate experience with high contrast & resolution
- IS series is designed to be accessible from front via magnetic tool.
- IS series display provide wider viewing angles and pixel-perfect imagery which is a real advance over the traditional LCD and DLP video wall.
- It is the first product that is able to make HD display like 2.5mm in the industry.
- Apply high efficiency with 90% ultra-long life power supply.
- Noise free. Ensure you a quite environment.

## Applications



# Product Specifications

Model Name		IS1.2	IS1.5	IS1.8	IS2	IS2.5
Basic parameter	Pixel Pitch	1.25mm	1.538mm	1.86mm	2mm	2.5mm
	Pixel Configuration	SMD 3-in-1	SMD 3-in-1	SMD 3-in-1	SMD 3-in-1	SMD 3-in-1
	Pixel Density (m <sup>2</sup> )	640,000 pixels/m <sup>2</sup>	422,500 pixels/m <sup>2</sup>	288,906 pixels/m <sup>2</sup>	250,000 pixels/m <sup>2</sup>	160,000pixels/m <sup>2</sup>
	LED Package type	SMD1010	SMD1010/1212	SMD1515	SMD1515	SMD2020
LED Lifetime Hr (24Hr, Luminance 50% down)		100,000 Hrs	100,000 Hrs	100,000 Hrs	100,000 Hrs	100,000 Hrs
Physical parameter	Physical Resolution of Module (W × H)	256 × 128	208 × 104	172 × 86	160 × 80	128 × 64
	Physical Resolution of Cabinet (W × H)	512 x 384	416 x 312	344 x 258	320 x 240	256 x 192
	LED Module Dimensions (mm)	320 × 160	320 × 160	320 × 160	320 × 160	320 × 160
	No. of Modules Per Cabinet (W × H)	2 x 3	2 x 3	2 x 3	2 x 3	2 x 3
	Cabinet Dimensions (W × H × D) (mm)	640 x 480 x 50	640 x 480 x 50	640 x 480 x 50	640 x 480 x 50	640 x 480 x 50
	Weight Per Cabinet (kg/Cabinet)	6.5±5%	6.5±5%	6.5±5%	6.5±5%	6.5±5%
	Cabinet Material	Aluminum Diecasting	Aluminum Diecasting	Aluminum Diecasting	Aluminum Diecasting	Aluminum Diecasting
Optical Parameter	Brightness (cd/m <sup>2</sup> )	>800	>800	>800	>800	>800
	Contrast Ratio	4,000 : 1	4,000 : 1	4,000 : 1	4,000 : 1	4,000 : 1
	Front Mask for C/R	No/GOB	No/GOB	No/GOB	No/GOB	No/GOB
	Viewing Angle (H/V)	160° / 160°	160° / 160°	160° / 160°	160° / 160°	160° / 160°
	Refresh Rate (Hz)	1920 ~ 3,840 Hz	1920 ~ 3,840 Hz	1920 ~ 3,840 Hz	1920 ~ 3,840 Hz	1920 ~ 3,840 Hz
	Bit-depth(bit)	13-14 bit	13-14 bit	13-14 bit	13-14 bit	13-14 bit
	Scan method	1/64	1/52	1/43	1/40	1/32
	Colours	4 trillion	4 trillion	4 trillion	4 trillion	4 trillion
	Color Temperature - Default	6500K±500K	6500K±500K	6500K±500K	6500K±500K	6500K±500K
Electrical Parameter	Max Power Consumption (w/m <sup>2</sup> )	800	800	600	600	600
	Typical Power Consumption (w/m <sup>2</sup> )	240	240	180	180	180
	Power	AC100-240V, 50/60Hz	AC100-240V, 50/60Hz	AC100-240V, 50/60Hz	AC100-240V, 50/60Hz	AC100-240V, 50/60Hz
Operation Conditions	Operating Temp/Humidity	-10 - 40°C / 10% - 80%	-10 - 40°C / 10% - 80%	-10 - 40°C / 10% - 80%	-10 - 40°C / 10% - 80%	-10 - 40°C / 10% - 80%
	Storage Temp/Humidity	-20 - 60°C / 10% - 90%	-20 - 60°C / 10% - 90%	-20 - 60°C / 10% - 90%	-20 - 60°C / 10% - 90%	-20 - 60°C / 10% - 90%
	Cooling	Self	Self	Self	Self	Self
	IP Rating	IP 30	IP 30	IP 30	IP 30	IP 30
Certification	Safety	/	/	/	/	/
	EMC	/	/	/	/	/
Service	Servicing	Front	Front	Front	Front	Front
Curve Installation	Curve Support (-:concave +: convex) (°)	/	/	/	/	/

# System Configuration

